



**SLOVENSKÝ
ZVÄZ
CYKLISTIKY**



UCI Mountain bike continental series – XCO Drozdovo

XCO Drozdovo CS – Európsky pohár

1. kolo SP MTB XC

| | |
|-----------------------|--|
| Announcer: | Slovak Cycling Federation, Kukuričná 13, 831 03 Bratislava |
| Organizer: | ŠK Topoľčianky OZ Vrchy |
| Location: | SKI Drozdovo Nová Baňa GPS: 48°42'90.3"N 18°55'31.2"E |
| Race date: | 18.-19.4.2026 |
| Race director: | Milan Húsenica, +421 917 124 780, xcodrozdov@gmail.com |
| Race secretary: | Peter Haspra |
| Course director: | Jan Žilovec |
| UCI commissaire: | Miranda Colenbrander (NL) |
| Head of SZC referees: | Lukáš Radosa |
| Race office: | SKI Drozdovo Nová Baňa GPS: 48°42'89.6"N 18°55'24.9"E |
| Official race doctor: | Záchranná služba Slovenská republika |
| Antidoping control: | SKI Drozdovo Nová Baňa GPS: 48°42'89.6"N 18°55'24.9"E |
| Showers: | Penzión Drozdovo GPS: 48°42'90.3"N 18°55'31.2"E |
| Registration: | On-line registration for all categories till 16.4.2026 15:00 h available on: https://cycling.sportsoft.cz/mtbsk/ |

ONLY ONLINE REGISTRATION IS POSSIBLE!!!

On-line payment using paygate by registration.

Starting fee: According to SZC 2026 rules, see table below

Race course: Miesto okruhu
GPS: 48°42'81.0"N 18°55'36.1"E (Full Race course start point)

Elite course lap: 4 200 m/lap - 182 m/lap

Masters / U15: 2 500 m/lap - 98 m/lap

U13 course lap: 2 300 m/lap - 87 m/lap

Mini course lap: 850 m/lap - 25 m/lap



**SLOVENSKÝ
ZVÄZ
CYKLISTIKY**



| | |
|-------------------|---|
| Race length: | According to UCI and SZC 2026 rules |
| Nearest hospital: | Nemocnica Zlaté Moravce a.s, Bernolákova 4, 953 01 Zlaté Moravce, tel.: +421 037 6905 111 GPS: 48°38'31.4" N 18°39'65.8" E. |
| Timing: | Provided by VOS-TPK Online results here: https://vysledky.sportsoft.cz/race/894 |
| Prize-money: | According to UCI financial obligations SZC 2026 rules, Prize list listed below |
| Team Area: | Team area reservation – via official team/expo booking form Sektor A – reservation in advance Location: GPS: 48°42'93.7"N 18°55'22.0"E Sektor B – parking / Camper - van reservation in advance Location: GPS: 48°42'98.7"N 18°55'08.9"E Sektor C – parking - without reservation Location: GPS: 48°42'97.7"N 18°55'05.0"E |
| Responsibilities: | <ol style="list-style-type: none"> 1) The organizers and SZC will not, under any circumstances, be liable to any accidents or damage that occurs during training and competitions 2) The organizers and SZC decline all responsibilities towards the riders and others in case of an accident 3) For all cases not covered by these specific regulations, the UCI rules will apply. Any problems will be solved between the organizers, the Commissaires Panel and SZC officials |
| Race schedule: | |
| Friday: | |
| 16:45-18:00 | Race office (Saturday categories) |
| 17:00-19:00 | Official training for Cross Country |
| 19:30 | Team managers meeting- race office |



Saturday:

| | |
|---------------|---|
| 8:00 – 9:15 | Official training for Cross Country |
| 8:00 – 10:00 | Race office (riders confirmation at least 1h before start of riders category) |
| 9:30 | Men U17 |
| 9:31 | Women U17 |
| 10:45 | Men U19 UCI CJ |
| 12:00 - 12:45 | Official training for Cross Country |
| 11:00 – 15:30 | Race office (riders confirmation at least 1h before start of riders category) |
| 13:00 | Women Elite UCI CS |
| 13:01 | Women U23 UCI CS |
| 13:02 | Women U19 UCI CS |
| 14:45 | Men U23 UCI UCI CS |
| 16:30 | Men Elite start UCI CS |

Awards ceremony will start 15 min after each category finish, prize money will be payed off in Race Office after award ceremony

Sunday:

| | |
|--------------|---|
| 8:00 – 10:00 | Race office (riders confirmation at least 1h before start of riders category/ before riders category technical abilities test beginning) |
| 8:30-9:15 | Official training for Cross Country |
| 9:30 -11:00 | Technical abilities test for U11/U13 categories |
| | Location: |
| | GPS: 48°42'93.8"N 18°55'27.1"E |
| 9:30 | Masters A, B, C and Women Masters categories Start |
| 11:15 | Men U11 Start |
| 11:30 | Women U11 Start |
| 12:00 | Men U13 Start + Women WU13 Start |
| 12:45 | Men U15 Start |
| 13:45 | Women WU15 Start |
| 14:30 | All categories awards ceremony |



**SLOVENSKÝ
ZVÄZ
CYKLISTIKY**



UCI



Accommodation: SKI Drozdovo, Nová Baňa, penziondrozdovo@gmail.com
 Tatran ŠPORT, Športová 17, Topoľčianky, tatran@topolcianky.sk
 Penzion Lipa, Kozmálovská cesta 153, Tlmače recepacia@penzionlipa.sk

Starting fee:

| Category | Fee |
|--------------------------------------|------|
| MU11 /WU11 | 5 € |
| MU13 /WU13 | 5 € |
| MU15 /WU15 | 5 € |
| MU17 /WU17 | 15 € |
| MU19 /WU19 | 25 € |
| Masters | 25 € |
| Muži ELITE + U23 Ženy ELITE + U23 | 30 € |

Prize-money:

CS:

| Place | Men/ Women ELITE | Men / Women U23 | MU19 /WU19 | MU17 /WU17 |
|-------|------------------|-----------------|------------|------------|
| 1. | 350 € | 175 € | 85 € | 30 € |
| 2. | 280 € | 140 € | 70 € | 20 € |
| 3. | 210 € | 105 € | 55 € | 10 € |
| 4. | 175 € | 90€ | 45 € | |
| 5. | 140 € | 70 € | 35 € | |
| 6. | 105 € | 60 € | 30 € | |
| 7. | 70 € | 35 € | 20 € | |
| 8. | 60 € | 30 € | 15 € | |
| 9. | 50 € | 25 € | | |
| 10. | 30 € | 20 € | | |



**SLOVENSKÝ
ZVÄZ
CYKLISTIKY**



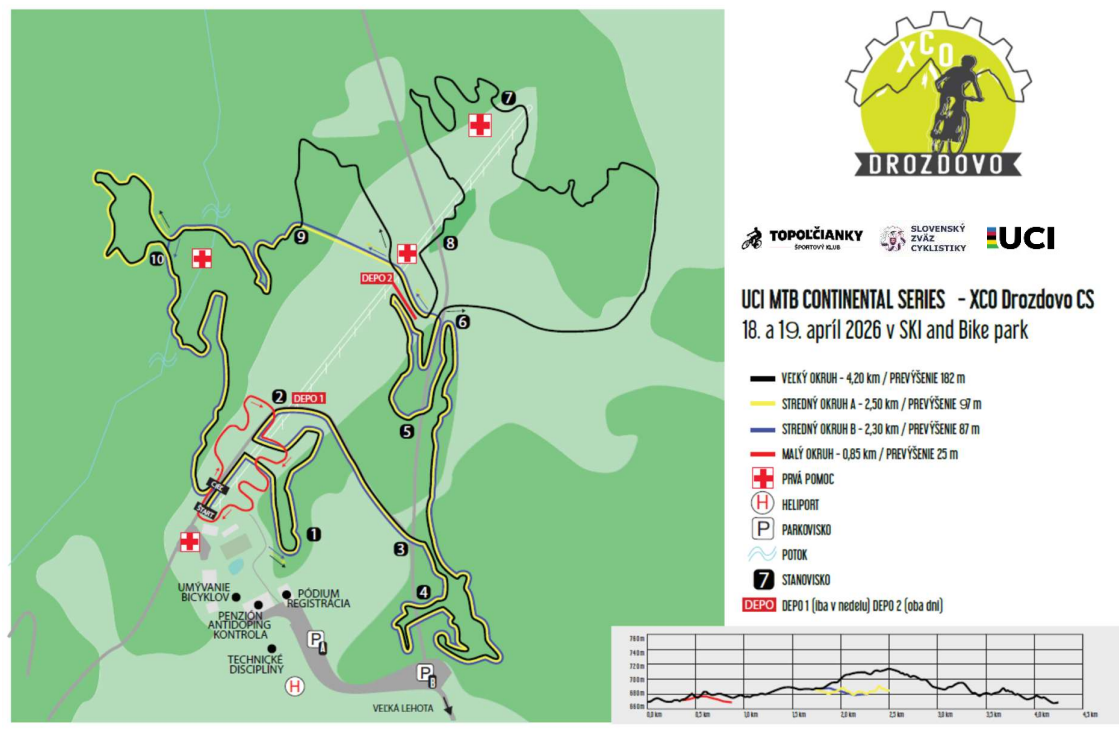
UCI points:

CS:

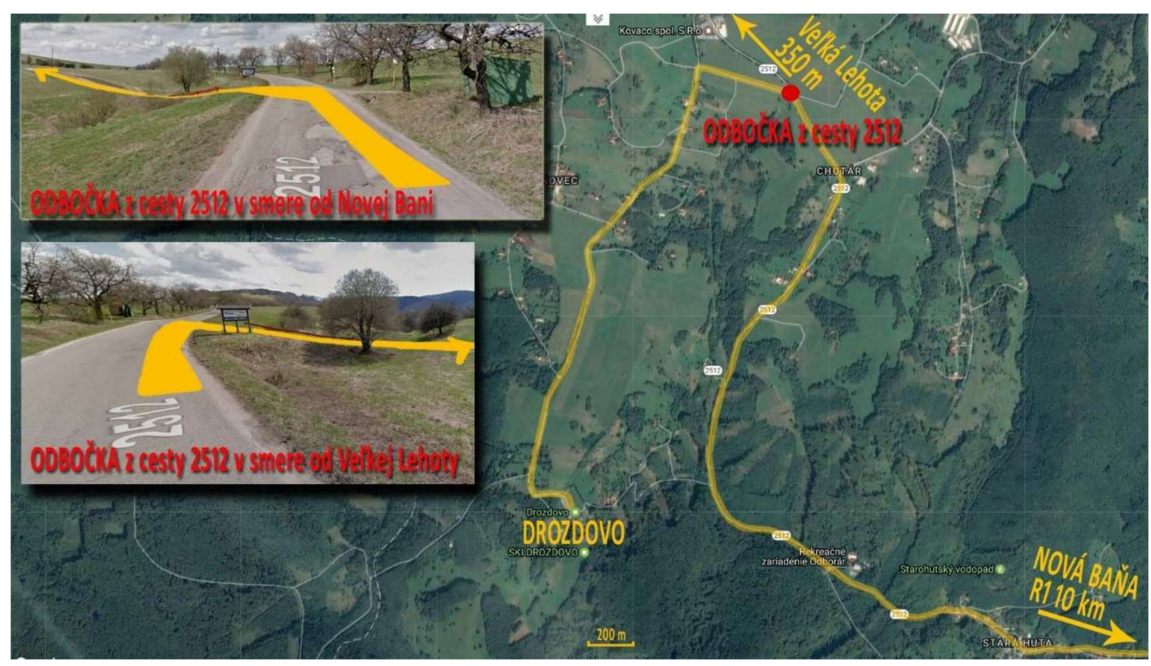
| Place | Men/ Women ELITE | Men / Women U23 | MU19 /WU19 |
|-------|------------------|-----------------|------------|
| 1. | 100 | 60 | 20 |
| 2. | 80 | 40 | 18 |
| 3. | 60 | 30 | 16 |
| 4. | 50 | 25 | 14 |
| 5. | 40 | 20 | 12 |
| 6. | 35 | 18 | 10 |
| 7. | 30 | 16 | 8 |
| 8. | 27 | 14 | 6 |
| 9. | 24 | 12 | 4 |
| 10. | 22 | 10 | 2 |
| 11. | 20 | 8 | |
| 12. | 18 | 6 | |
| 13. | 16 | 4 | |
| 14. | 14 | 2 | |
| 15. | 12 | 1 | |
| 16. | 10 | | |
| 17. | 9 | | |
| 18. | 8 | | |
| 19. | 7 | | |
| 20. | 6 | | |
| 21. | 5 | | |
| 22. | 4 | | |
| 23. | 3 | | |
| 24. | 2 | | |
| 25. | 1 | | |

Map:

-course map



-mapa areálu, príjazdu,...





Organizer reserves rights to change this document – technical guide of event.

By participating, you give agreement to organizer and SZC to publish audio – visual recordings made at this event.

Please be polite to our countryside, cycling is eco-friendly sport.

Approved by organizer: Meno priezvisko

Approved by SZC: Michal Ržonca

Topoľčianky, 2.2.2026

Event supported by:

